

MAR 106

Modular Ice Machine 785 kg

Item #:
Project:
Quantity:



FEATURES

- Scale ice machine, in "compact system" version; built-in unit. Storage bin not supplied, to be purchased separately.
- AISI304 Stainless steel evaporator and ice scraper blade. Redesigned evaporator compartment end-walls.
- Foodgrade ABS plastic water sump tray, easy remove for cleaning and sanitising.
- Electromechanical control panel. Electrical protections, rotation speed & reverse phase controls.
- Low- water sensor protection. Hermetic compressor. Storage bin thermo-static ice level sensor
- Drive motor / gear reducer with V-Belt drive.
- Stainless steel panels in scotch-brite finish, with rounded corners, easy to remove for maintenance.
- ON/OFF manual switch, with weekly programmable timer.



MAR 106
Scale ice
Residual water content 2%
Thickness 1 or 2 mm

CONDENSING SYSTEM

Air cooled
Water cooled

REFRIGERANT GAS

R404A
R452A

VOLTAGE V/Hz/ph

400/50/3N

RECOMMENDED BINS

Head	Bins		kg
	Bin	Weight	
MAR 106	●	UBH1100	553
	●	UBH1600	812
	●	UBH2250	1068
	●	SIS700	318 + 73
	●	SIS1350	613 + 73 + 73

LEGEND:

- ✓ : Perfect combination between ice maker and bin
- : Ice chute cut-out performed upon installation
- CBTxxxxxxx : need additional bin top

CERTIFICATIONS



OPERATING REQUIREMENTS

	Minimum	Maximum
Air temperature	10	43
Water temperature	5	38
Water pressure	1 bar (14 psi)	5 bar (70 psi)
Electrical voltage	-10	+10

IMPORTANT NOTICE:
Models and specifications are subject to change without notice.
This spec sheet is meant for commercial purpose only.
For technical documentation please refer to our service manuals.

Download our free **App Scotsman Ice**
Apple store
Google play
Windows store



www.scotsman-ice.it
www.scotsman-ice.com

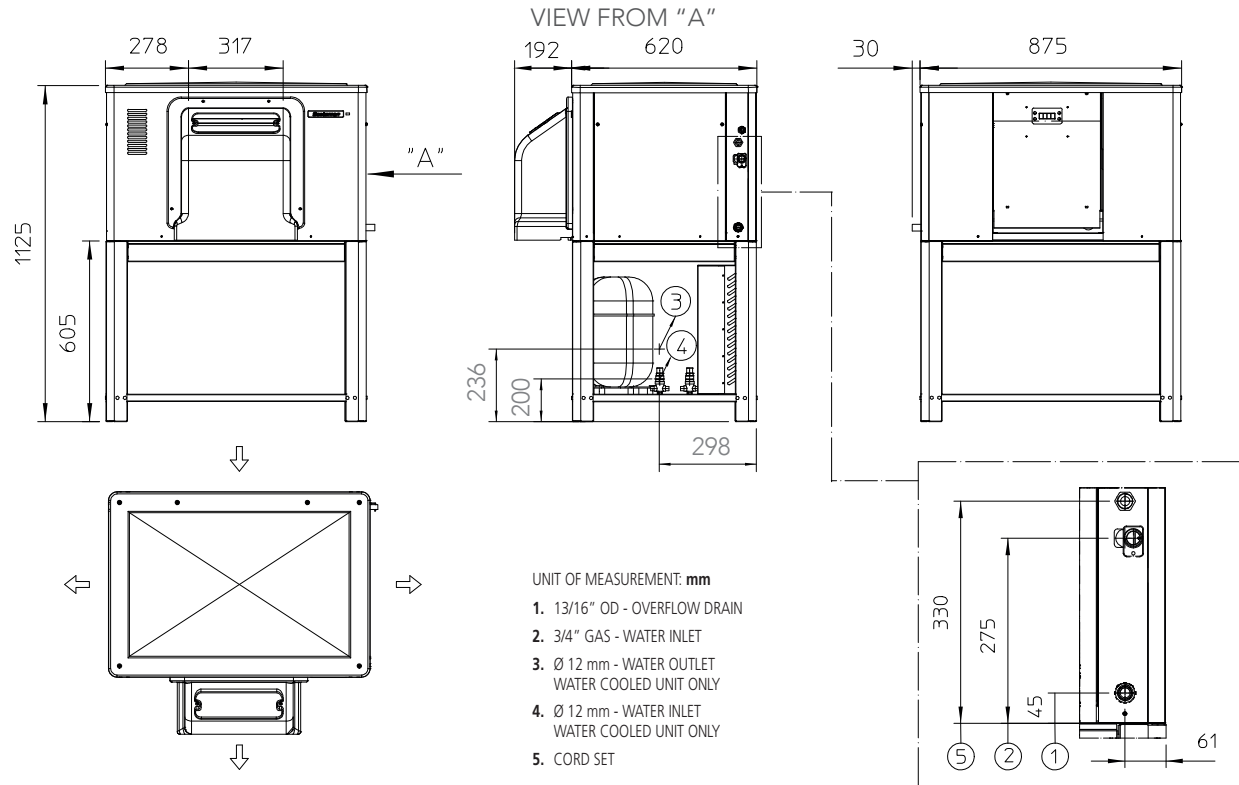
Modular Ice Machine 785 kg

MAR 106

Modular Ice Machine 785 kg

Item #:
Project:
Quantity:

Modular Ice Machine 785 kg



UNIT DATA		SHIPPING DATA															
Size (W x D x H)		905 x 812 x 1125 mm		Carton (W x D x H)		980 x 740 x 1230 mm											
Net weight		188 kg		Weight		205 kg		All data refer to R404A refrigerant models									
		24 h ice production kg °C Amb. / °C Water						Energy consumption (*)		Water usage (*)	Instant power	Compressor	Circuit wires	Max. fuse size			
Version	Voltage	10°C/10°C		21°C/10°C		32°C/21°C		kWh/ 100 kg	kWh/ 24h	l/h	W	W	No. x 0mm ²	A			
		1 mm	2 mm	1 mm	2 mm	1 mm	2 mm										
MAR 106 AS	400/50/3N	785	700	0	650	0	580	13.5	80.0	24.2	3500	4450	5 x 1.5	16			
MAR 106 WS	400/50/3N	785	700	0	0	0	0	13.5	80.0	600.0	3500	4450	5 x 1.5	16			
Compressor:		(Te -23.3°C; Tc +54.5°C)															
(*) Data refer to 32°C Amb. / 21°C Water temperature conditions																	